



Application Server



1414c's eVideo™ Application Server is a web-based software streaming solution that empowers companies to create, automate, and manage streaming media webcasts over the Internet and corporate intranets.

A Completely Integrated Solution

eVideo Application Server integrates IP-based streaming technology components with PowerPoint slides, interactive chat and surveys into a powerful web communication solution. The solution enables speedy and cost-effective mass dissemination of corporate announcements, presentations, training sessions, video conferences, and other events. eVideo Application Server streamed video broadcasts can be delivered live or as on-demand stored events to employees, customers, partners or suppliers around the world.

Network Friendly

The eVideo Application Server provides critical management capabilities to connect and control all elements that are part of the

streaming media environment, including streaming servers and encoders. The solution automatically delivers the same event across different bandwidths, networks, and players, to best match endpoint capabilities.

Using the NT-based management server, administrators have complete control over bandwidth utilization, event scheduling, streaming delivery paths, and multilevel security, both locally and remotely. The result is a powerful and intelligent rich media platform that is easy to deploy, manage, and use. Most importantly, it requires minimal technical intervention at the end points – participants log into events using a standard web browser, such as Internet Explorer or Netscape.

The eVideo Application Server supports concurrent major streaming platforms, including Microsoft Windows Media Technology, RealNetworks RealServer Technology and 1414c's own MPEG-based streaming servers.

1414c

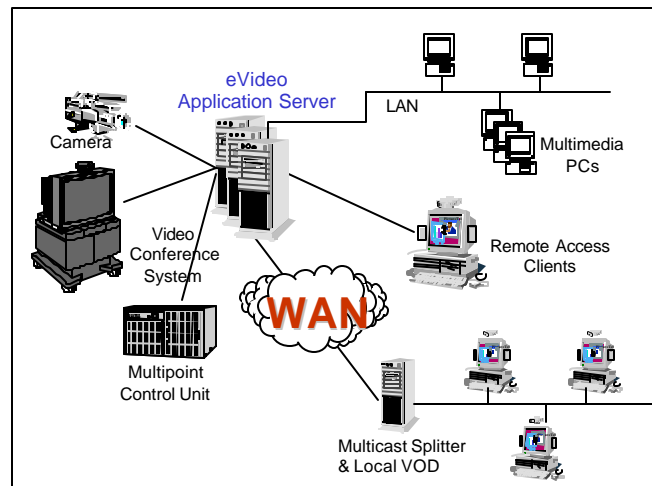
205 Ravendale Drive
Mountain View, CA 94043
(650) 967-2774
(650) 967-0686 Fax
<http://www.1414c.com>

1414c eVideo™ Application Server

FEATURES & BENEFITS

- ✍ **Web Integration**
Support for IE 4.0 and Netscape 4.0.
- ✍ **IP Multicasting**
Deliver live video streams over multicast-enabled IP networks at bit rates ranging from 28.8kbps - 1.5Mbps.
- ✍ **Video-On-Demand**
Files stored on a video server can be viewed on demand by end users and played back at various quality levels.
- ✍ **Scalability of Audience Size**
Supports 3,000 simultaneous aggregate users for live events.
- ✍ **High Quality Video**
Support for TV quality video at bit rates ranging from 100kbps-1.5Mbps using Starlight's fourth generation video servers.
- ✍ **Full Integration and Support for Microsoft Netshow and RealNetworks G2.**
- ✍ **Multiple Concurrent Live Video Streams**
Video can be encoded simultaneously at different bit rates using different streaming engines.
- ✍ **Worldwide Service and Support**
On-site services for network design, integration, monitoring, consulting and event management available.
- ✍ **User Management**
Powerful management tools allow selection of audience based on security and bandwidth parameters.
- ✍ **Usage Tracking and Reporting**
Summary reports, statistics and tracking of users and content for both VOD and live programs.
- ✍ **Advanced Content Replication**
Stored video files can be replicated among distributed servers to minimize bandwidth consumption. Administrators can schedule automated replications as well as parameters for deleting files.
- ✍ **Simplified Installation**
Automated installation of client and server software.
- ✍ **Program Guide**
Detailed information about live and stored events.
- ✍ **Microsoft PowerPoint Add-In**
Presenters can easily import slides and integrate them into the presentation environment.
- ✍ **Interactive Audience Feedback**
Live chat for communicating with Presenters.

Network Diagram



© 1414c, 2000.
1414c and eVideo are trademarks of PictureTel Corporation.
All other brands and products are trademarks of their respective owners. Information subject to change without notice.